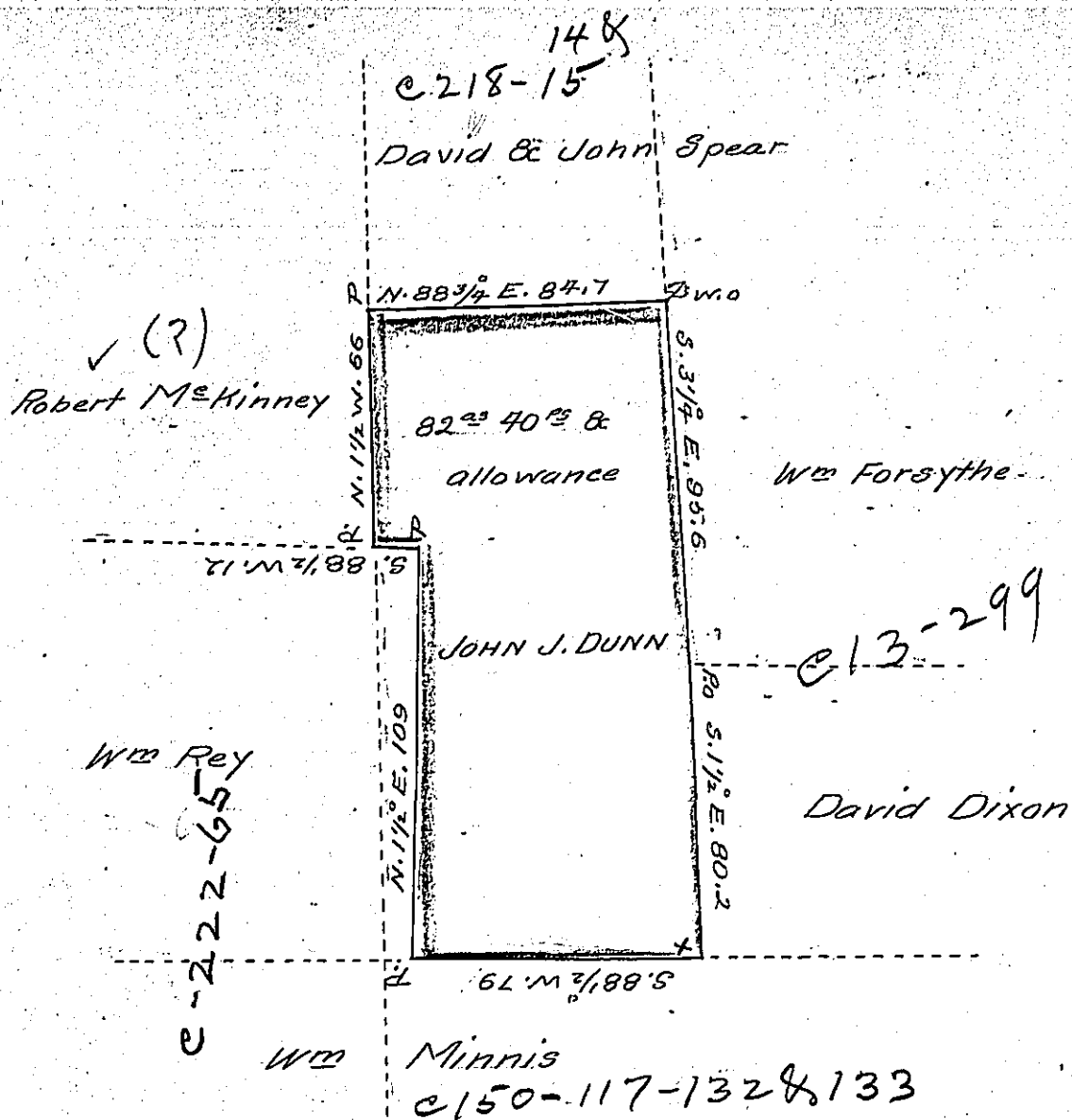


H52-97



Survey made the 29<sup>th</sup> Day of Sept. A.D. 1853 of Eighty two acres and forty perches of Land situated in Cranberry Tp. Butler County and on the waters of Breakneck Creek, at the instance of John J. Dunn by virtue of his settlement and improvement and agreeably to the adjoiners

Hugh McKee

County Surveyor

I Wm Purviance County Surveyor of Butler do hereby certify that the foregoing draft of Survey is a correct copy of a Survey entered in the books of my predecessor in office Hugh McKee, and do further certify and make known that the said described tract or lot of land does not appear to be appropriated by warrant or otherwise from the books and papers in my possession than as applied for by J. Dunn. Witness my hand and Seal this 24<sup>th</sup> day of February A.D. 1854



To J. P. Brawley Esq.  
Surveyor Genl

Wm Purviance

County Surveyor

IN TESTIMONY that the above is a copy of the original remaining on file in the Department of Internal Affairs of Pennsylvania, made conformably to an Act of Assembly approved the 16th day of February, 1833, I have hereunto set my Hand and caused the Seal of said Department to be affixed at Harrisburg, this fifteenth day of August 1904

*George R. Brown*  
Secretary of Internal Affairs.